



# DAPREST 200

Round enamelled conductor of copper, corona resistant , class 200

**Product name:**

Daprest 200 - Gr 2  
Daprest 200 - Gr 3

**Specifications:**

IEC 60317-13 and internal LWW

**UL approval:**

Not approved

**Class: 200**

Temperature index:  $\geq 200^{\circ}\text{C}$   
Heat shock:  $220^{\circ}\text{C}$

**Conductor material:**

EN 1977 - ETP1 CW003 A  
EN 1977 - ETP CW004A  
ASTM B49 - ETP C11000/C11040

**Insulation:**

Basecoat: THEIC-modified polyester or polyesterimide  
Overcoat: PD-resistant polyamide-imide

**Properties:**

- Excellent corona effect resistance
- Very good heat resistance
- High cut-through temperature
- Moisture sensitive

**Field of application:**

- Transformers and Electric motors
- Traction motors
- Power bridges
- Inverter fed motors

**Dimension range:**

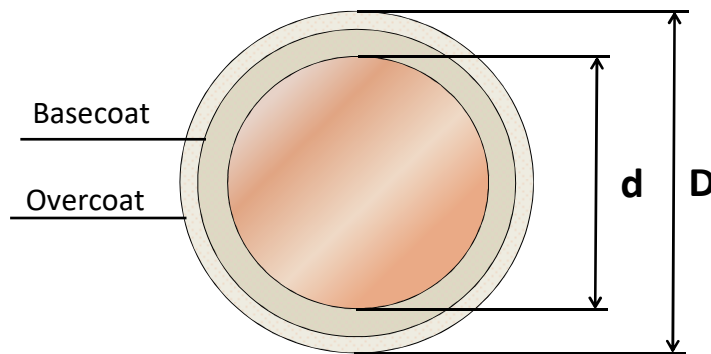
Daprest 200 Gr 2  $0,630 \leq \varnothing \leq 1,900 \text{ mm}$   
Daprest 200 Gr 3  $0,630 \leq \varnothing \leq 1,900 \text{ mm}$

**Standard packaging:**

$0,630 \leq \varnothing \leq 1,800 \text{ mm}$       A250/400, A315/500,  
A400/630

**Shelf life:**

1 year, under normal ambient conditions



D - d = Increase

# DAPREST 200

Round enamelled conductor of copper, corona resistant, class 200

## Properties for DAPREST 200

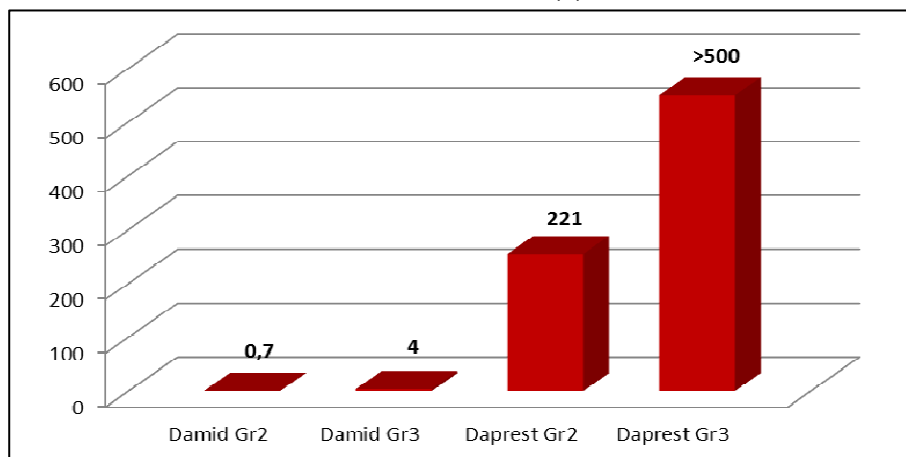
Main characteristics	Test method	Property values	Test values for a DAPREST 200 sample (1,32 mm, Gr2)
<b>Thermal properties</b>			
Heat shock	IEC 60851 - 6.3	≥ 220°C	≥ 220°C
Cut-through	IEC 60851- 6.4	≥ 340°C	≥ 340°C
Temperature index	IEC 60172	≥ 200°C <sup>1)</sup>	≥ 200°C <sup>1)</sup>
<b>Electrical properties</b>			
Conductor resistance	IEC 60851 - 5.3	0,01724 Ωmm <sup>2</sup> /m	0,01724 Ωmm <sup>2</sup> /m
Conductivity	1/R	> 58 m/(Ωmm <sup>2</sup> )	> 58 m/(Ωmm <sup>2</sup> )
Breakdown voltage	IEC 60851 - 5.4	IEC 60317-0-1 <sup>2)</sup>	8,2 kV
<b>Mechanical properties</b>			
Elongation	IEC 60851-3.3	IEC 60317-0-1 <sup>2)</sup>	40%
Springiness	IEC 60851-3.4	Springiness <sup>3)</sup>	IEC 60317-0-1 <sup>2)</sup>
		Springback <sup>4)</sup>	≤ 5°
Flexibility <sup>8)</sup>	IEC 60851-3.5	Mandrel wind. <sup>2)</sup>	3 x Ø
Adherence	IEC 60851-3.5	Jerktest <sup>5)</sup>	No loss of adhesion
		Peeltest <sup>6)</sup>	min. 110 <sup>7)</sup>

1. According to supplier certificate
2. Values depend on dimension
3. Up to an including 1,60 mm
4. Over 1,60 mm
5. Up to and including 1,00 mm
6. Over 1,00 mm
7. Revolutions x nominal dimension
8. Internal LWW standard

Values above are for information only. All values noted are typical and can vary between lots and dimensions.

## Lifetime of DAMID and DAPREST under inverter duty

Test conditions: 16kHz 2,4 kV p-p 155°C



Test developed and performed by enamel supplier

The technical data included is up to date at the time of printing.

LWW reserves the right to make any amendments deemed necessary

Ed.A(3)